

Power Line Filter DL-10DZ2R

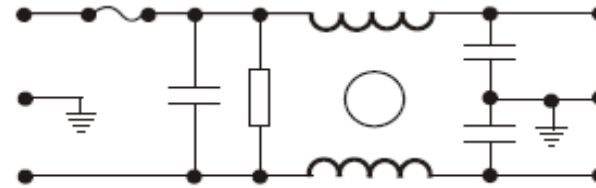
Datasheet

Technical Data

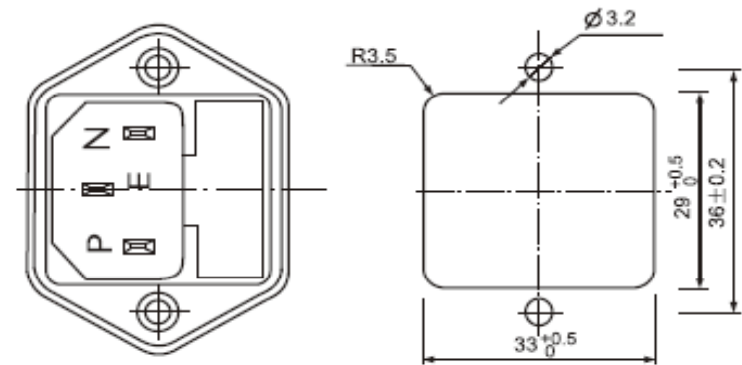
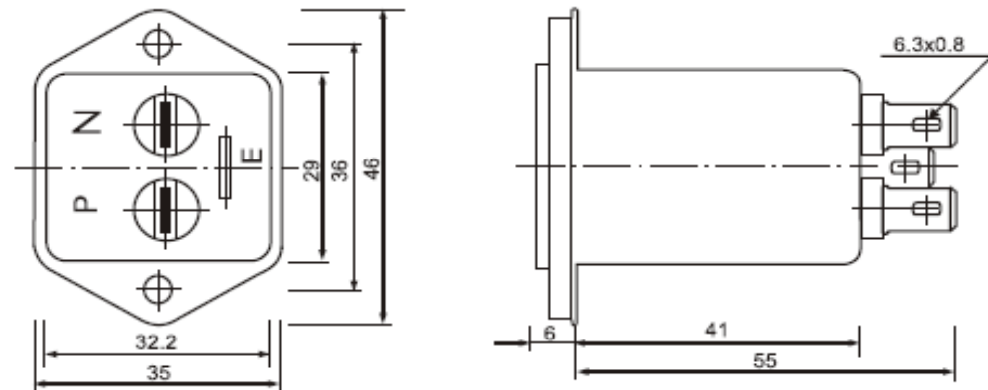
| | |
|----------------------|--|
| Rate Voltage | 250VAC |
| Operating Frequency | 50/60Hz |
| Test Voltage(1min) | 1500VDC (line/line) 1500VAC (line/ground) |
| Climatic Category | 25/085/21 |
| Rated Current | 10A |
| Ground Capacitance | 2.2nF |
| Leakage Current | ≤0.5 mA |
| Discharge Resistance | 1MΩ |



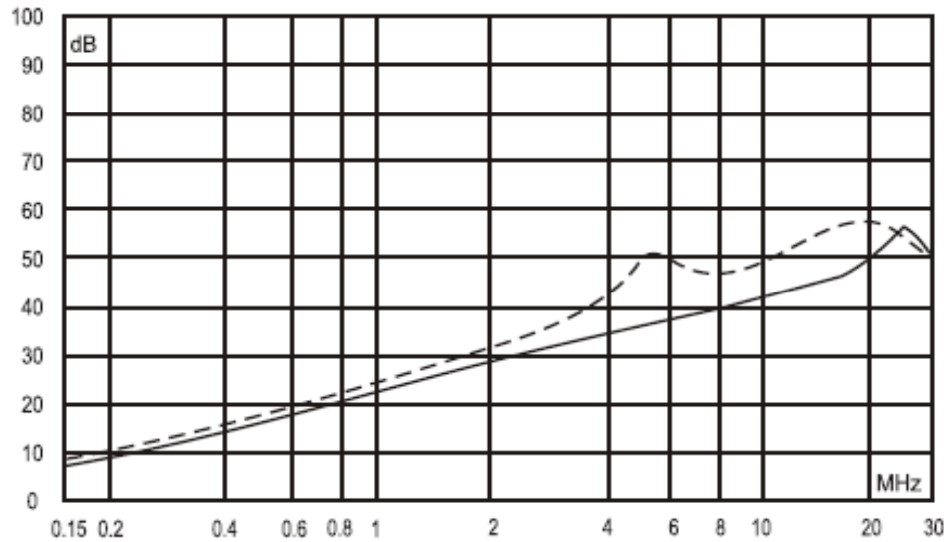
Typical Circuit Diagram



Outline Drawing and Dimensions (mm)



Insertion Loss in dB



— Common Mode
 - - - Differential Mode